

E-4 Sanitary Sewer Project

Kyle Harvey, PE

Project Engineer, SAWS

David C. Garcia, PE

Manager - Engineering, SAWS

Roxanne L. Lockhart

Contract Administrator, SAWS

Diana Woltersdorf

Manager – Contract Administration, SAWS

Marisol V. Robles

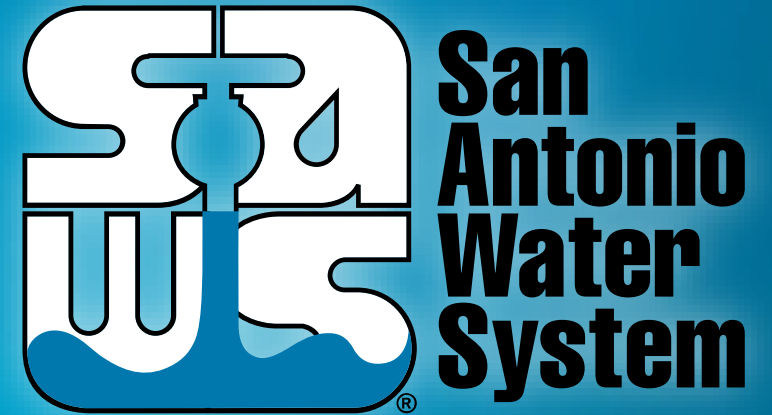
SMWVB Program Manager, SAWS

Cara Tackett, PE

Engineer of Record, Pape-Dawson Engineers

Oden Hughes, LLC

Project Developer



Non-Mandatory Pre-Proposal Meeting
December 8, 2020 at 2:00 PM

MAKING SAN ANTONIO
WATERFUL 

WebEx Meeting Information

- With the switch to an online WebEx meeting, attendees can:
 - Access the presentation thru the WebEx link to follow along real-time
 - Access via phone and follow along with the PowerPoint posted on the SAWS web at:
https://apps.saws.org/business_center/contractsol/Drill.cfm?id=3908&View=Yes
 - Use the chat feature to ask questions, or
 - Ask questions through email to roxanne.lockhart@saws.org
 - SAWS will read questions aloud
- Please mute your devices during the meeting

Oral Statements

Oral statements or discussion during the pre-proposal meeting will not be binding, nor will it change or affect the terms or conditions within the Plans and Specifications for this Project. Changes, if any, will be addressed only via an Addendum.

Meeting Agenda

- Project Overview
- Contract Requirements
- Key Project Information
- SMWB
- Evaluation Process
- Required Experience
- Evaluation Criteria
- Proposal Packet Preparation
- Additional and Communication Reminders
- Key Dates/Submission Date
- Contract Background
- Contract Requirements
 - Supplemental Conditions
 - Special Conditions
 - Special Provisions/Specifications
- Upcoming Addendum
- Project Information
- Questions

Project Overview

- The project will consist of construction of approximately 5,800 LF of 42-inch gravity sanitary sewer installation via open cut and multiple bores, installation of large diameter gravity sewer within the 5-yr and 100-yr floodplain, careful planning and sequencing of construction activities to tie into existing sewer infrastructure and close coordination with several key stakeholders.

Key Project Information

- Contract duration is 700 calendar days
- Construction cost estimate is approximately \$13.4 M
- Procured under Chapter 2269 of Texas Government Code as a Request for Competitive Sealed Proposals (RFCSP)
- EPA Consent Decree project, which requires additional reporting and retention of document (see Special Conditions)
- This project is also a Developer project with Ogden Hughes, LLC
- Geotechnical Data Report and Geotechnical Design Report are available on the SAWWS' website with execution of a disclaimer

SMWB

Small Minority, and Woman-owned Business (10 points)

- Up to 10 points may be earned for SMWB participation as indicated on SIR-10 and SIR-11.

Industry	Aspirational SMWB Goal
Construction	20%

The aspirational SMWB goal is expressed as 20% of your total bid price.

SMWVB Scoring

Proposed SAWS Construction Alternative Delivery Method SMWB Scoring:

All respondents may earn the maximum number of SMWB points (10 points). Firms may use any combination of points below when attempting to meet the SMWB goals. Self-performance and subcontracting may be used to achieve the aspirational goals and earn points. SMWB prime contractors and/or subcontractors must be certified by the South Central Texas Regional Certification Agency, and must have a local presence in the San Antonio Metropolitan Statistical Area in order to be eligible for SMWB points.

1. M/WBE Scoring Method: 10 Points (By percentage) 20.00% M/WBE Goal

- MBE Participation Percentage between 1% and 4.99%: 1 Point
- MBE Participation Percentage between 5% and 9.99%: 2 Points
- MBE Participation Percentage between 10% and 14.99%: 4 Points
- MBE Participation Percentage between 15% and 16.99%: 5 Points
- MBE Participation Percentage between 17% and 19.99%: 8 Points
- MBE Participation Percentage meeting or exceeding 20.00%: 10 Points

2. SBE (Non-M/WBE) Scoring Method: 5 Points (By percentage) 5% SBE Goal

- SBE Participation Percentage between 1% and 1.99%: 1 Point
- SBE Participation Percentage between 2% and 2.99%: 2 Points
- SBE Participation Percentage between 3% and 3.99%: 3 Points
- SBE Participation Percentage between 4% and 4.99%: 4 Points
- SBE Participation Percentage meeting or exceeding 5.00%: 5 Points

Good Faith Effort Plan (GFEP) FAQs

- **Q: Is the 20% SMWVB goal mandatory?**

A: No, but we ask prime contractors to do their best with good faith outreach efforts. If the goal is not met, proof of outreach efforts is required with the submittal.

- **Q: What if I am having trouble finding SMWVB subcontractors?**

A: Please email the SMWVB Program Manager with the scopes of work you are seeking. You will receive lists of local SMWVB-certified firms to contact.

- **Q: What if my business is SMWVB-certified? Do I need to find SMWVB subs?**

A: If your firm is SMWVB-certified, you will most likely meet the goal. However, the GFEP is a required document, and a good faith outreach effort is still necessary.

- **Q: Do I need to include all my subcontractors in the GFEP or just those that qualify towards the SMWVB goal?**

A: All subcontractors need to be included in the GFEP, even those that may not count towards the SMWVB goal.

- **Q: What if I have questions about the GFEP?**

A: Please contact the SMWVB Program Manager at 210-233-3420, or at Marisol.Robles@saws.org. GFEP questions can be asked at any time before the submittal is due.

Accepted SMWVB Certification Agency

- **South Central Texas Regional Certification Agency**
(Includes the Texas Historically Underutilized Business “HUB” Program)

Minimum Qualifications for SMWVB recognition:

- SBE-Certified (even MBEs and WBEs)
- **Local office or local equipment yard**

Post Award: Subcontractor Payment & Utilization Reporting (S.P.U.R.) System

1. Subcontractor & Supplier Payment Tracking
2. Subcontractor and Supplier Additions or Substitutions
3. LCP Tracker
4. Must be Current and Accurate before Retainage is released

<https://saws.smwbe.com>



The screenshot shows the homepage of the San Antonio Water System's Subcontractor Payment & Utilization Reporting System. The header features the San Antonio Water System logo, a link to "OUR MAIN SITE", and a "CONTACT SUPPORT" button. The main content area has a blue background with a photograph of industrial water treatment equipment. The title "Subcontractor Payment & Utilization Reporting System" is prominently displayed in white, with a "Log In" button below it. Below the title, there are three columns of links: "System Training" (with a sub-link "Training"), "About the System" (with a sub-link "Information for Vendors"), and "Account Access" (with sub-links "Account Lookup" and "Forgot Password"). A footer at the bottom states: "The Subcontractor Payment & Utilization Reporting System is powered by B2Gnow Software © Copyright 2018."

Contract Requirements

- Prevailing Wage Rate and Labor Standards – Section 2.10 of the General Conditions
 - Certified payroll to be submitted on weekly basis
 - Wage decisions are included within the specifications
 - Contractors to utilize LCP Tracker
 - Site visits are random and unannounced
 - Interviews will be conducted and will be private & confidential
 - Payroll records are subject to review
 - All apprenticeship programs will need to be approved by Department of Labor prior to starting
 - Contractors are responsible for sub-contractor payroll
 - Late payrolls delay contractor payments from SAWWS

Contract Requirements

- Insurance – Found in Section 5.7 of the General Conditions
 - Include General Liability for Construction, Pollution Liability, Excess Liability and Installation Floater (in lieu of Builder's Risk).
 - Selected contractor must be compliant with all other contracts in order for SAWWS to award the contract.
 - SAWWS will request insurance certificate prior to Board award to ensure insurance compliance and expedite execution of the contract.
 - Insurance must be compliant prior to executing the contract.

Evaluation Process

- Technical Evaluation Committee (TEC) will score the proposals based on the evaluation criteria published in the Supplementary Instructions to Respondents to determine the Respondent who can provide the best value to SAWWS
- Price will be calculated (lowest price receives the highest points) and added to final scores
- SMWB will be added to final scores
- Selection Evaluation Committee reviews final scores and recommends firm
- Negotiations, if any
- Board award

Required Experience

- Respondents submitting a proposal for this RFCSP should demonstrate, completely and sufficiently:
 - Large diameter wastewater pipeline installations are a primary business focus and service
 - Such services have been successfully provided for at least five (5) continuous years.

Proposal Packet Preparation

- Request FTP Site for proposal upload
- Proposal page limits do apply ; see Required Documents Matrix
- Review Instructions to Respondents and Supplementary Instructions to Respondents
- Utilize the Proposal Response Checklist
 - 3 files required for electronic submittal
 - Follow file naming convention
- Utilize Provided Evaluation Criteria Forms
 - Fillable form in Word is provided on SAWS website

EVALUATION CRITERIA FORM

The intent of this document is to provide Respondents a structure for their responses. While there are page limits for this solicitation, there are no character limitations.

Respondents should provide answers to the questions below in the order and spaces provided to ensure continuity between Respondent's submissions.

When responding to the questions below, Respondents should use the space provided in this form, unless otherwise indicated.

If all fields are not completed, the proposal may be deemed non-responsive.

1. Team Qualifications and Experience (20 Points)

a. Organizational Structure and Key Information of the Prime Contractor

Prior to responding to this section, refer to the Supplementary Instructions to Respondents for definitions and other requirements.

- i. Provide current business organizational structure, type of business structure, and stability of organization.
- ii. Provide total number of employees and annual company revenues as of December 31, 2019.
- iii. Provide the Debarment history for the company for the last ten (10) years.
- iv. Provide any litigation, arbitration, and claims history for the last three (3) years and any litigation, arbitration, and claims history with SAWS regardless of the year they occurred.
- v. Indicate the number of years performing contracting/construction work under current legal business name and/or previous legal business name(s).
- vi. Provide a clear description of the proposed team identifying Key Subcontractor(s), their role on the project, and teaming history. If the Prime Contractor has not worked previously with proposed Key Subcontractor(s), describe the proposed approach for ensuring successful completion of the project in accordance with Contract Documents.

SAN ANTONIO WATER SYSTEM
E-4 Sanitary Sewer

ECF-1

Proposal Packet Preparation

- Required Experience
 - Entire proposal should create a clear picture of Project Team experience and capabilities (Org chart, projects, and resumes for Key Personnel and Key Subcontractors)
 - Show large diameter wastewater pipe installation is primary business focus and service, such services successful for at a minimum of 5 continuous years.
- Thoroughly review scope and ensure project examples and key personnel resumes clearly show similar experience
- Thoroughly review evaluation criteria and respond with all required information to maximize points
- Avoid “boilerplate” responses

Proposal Packet Preparation

- Verify contact information for all project references, if SAWS is not able to contact reference, points may be deducted or proposal deemed non-responsive
- Ensure required documents are submitted and signed (i.e. Respondent Questionnaire, CIQ, etc.)
- Price Proposal
 - Acknowledge Addendums on Proposal Signature Page
 - Verify all formula extensions and mob and prep of ROW (Segment 1 & 2) have separate percentages; will need a final total for both Segements

Evaluation Criteria

Criteria	Weight	Pg. No.
Team Qualifications and Experience	20%	SIR-3
Quality, Reputation, and Ability to Deliver Projects on Schedule and within Budget	20%	SIR-5
Project Approach	15%	SIR-8
Price	35%	SIR-9
Small, Minority, and Woman-owned Business Participation	10%	SIR-10
TOTAL	100%	

Evaluation Criteria

Team Qualifications and Experience (20 points)

- Organizational Structure and Key Information on Prime Contractor
 - Company information (structure, debarment history, # of employees, years of construction work, etc.)
 - Organizational Chart with Key Personnel with percentage of availability, clear description of roles and responsibilities (Prime and Key Subs)
 - Team history or approach if no prior experience to ensure successful completion of project
 - Contractor CANNOT change Key Personnel identified in proposal without written request to SAWS and SAWS written approval
 - Financial statement within the last 12 months by independent CPA

Evaluation Criteria

Team Qualifications and Experience

- Qualifications and Experience of Key Personnel Proposed for Project
 - Resumes of Key Personnel on 8 ½ x 11” one per person, not to exceed one (1) page as identified on the Org Chart
 - Professional experience, education, role, descriptions of capabilities, etc.
 - List of all other active projects team member assigned, percentage, date of completion of work
 - ✓ Key Personnel include PM, CM, QA/QC Lead, Project Scheduler, Project Superintendent, Open Cut Superintendent, Tunneling Superintendent
 - ✓ Key Subcontractor roles could include tunneling, hand mining, large diameter open cut, sewer bypass.

Evaluation Criteria

Quality, Reputation and Ability to Deliver Projects on Schedule and within Budget (20 points)

- Prime Contractor Performance on Similar Projects in the past 10 years
 - List and describe 5 completed projects of similar size, scope, and complexity within the last 10 years
 - Owner reference contact information should be valid and recently verified
 - If valid contact information is not provided, score or proposal may be negatively impacted
 - 2 of the 5 projects listed must have been performed by the proposed Key Personnel
 - If SAWS experience, one project of similar size, scope, and complexity must be included
 - The Respondent shall provide information for all current and recently completed large diameter (24-inch and larger) gravity sanitary sewer pipeline projects performed in the last five (5) years for all Utility Owners in Texas

Evaluation Criteria

Quality, Reputation and Ability to Deliver Projects on Schedule and within Budget

- Key Subcontractor(s) Performance on Similar Projects in the Last 10 years
 - Provide list of 2 projects that Key Subcontractors Project Manager and/or Superintendent participated in of similar size, scope, and complexity
 - If Prime plans to self-perform and has no Key Subcontractors, provide a list of 2 additional projects
 - Key Personnel shall have participated in at least 1 of the 2 projects

Evaluation Criteria

Project Approach including Delivery Schedule (15 points)

- Project Approach
 - Narrative of Project Approach to complete project, including key milestones, specific critical processes and critical path items, phases and/or sequencing, permits, etc.
 - Availability of equipment and facilities that will be specifically utilized for this project.
 - Describe approach for coordination with key stakeholders (i.e., coordination with property owners and business owners being impacted by the project and approach for securing permits).
 - Provide innovative ideas for cost savings (due to a change in scope)
 - Opportunity to provide innovation (per TX Gov't Code 2269)
 - Providing initial price, based on provided Contract Documents
 - Negotiation can/will take place with best value Contractor
 - Quality Management Plan including subcontractor oversight, QA/QC, etc.

Evaluation Criteria

Project Approach including Delivery Schedule

- Project Schedule, Procurement of Long-lead Items, & Unforeseen Conditions
 - Critical path method (CPM) schedule Primavera or Microsoft project - Assume NTP of March 15, 2021.
 - Describe the approach to procure long-lead items
 - List and describe prior instances of unforeseen conditions
 - Approach for mitigating and managing unforeseen conditions on this project

Evaluation Criteria

Safety Information for Prime Contractor and Key Subcontractor(s)

- Records showing Total Recordable Incident Rate (TRIR) past 5 years for the Prime Contractor and Key Subcontractor(s).
- Provide records showing the company's Experience Modification Rate (EMR) past 3 years for the Prime Contractor and Key Subcontractor(s).
- List fatalities in company's safety history for Prime Contractor and Key Subcontractor(s).

Evaluation Criteria

Price (35 points)

- Lowest total price will receive 35 points.
- Remaining proposals will receive points based on comparison to the lowest price proposal.

Additional Reminders

- Register with Vendor Registration Program on the SAWS website at www.saws.org to ensure access to the latest information.
- To receive updates on specific projects, registered vendors should subscribe to the project by selecting the project, and clicking ‘Subscribe’ under the Notify Me box.



Notify Me

Receive updates sent straight to your
inbox.

Subscribe

Communication Reminders

- There shall not be any communication with the following during the **Proposal period**:
 - ✓ Design Engineer (Pape-Dawson)
 - ✓ SAWS Project Manager or Project Engineer
 - ✓ Any other SAWS staff
 - ✓ City Council member or staff
 - ✓ SAWS Board of Trustees
- This includes phone calls, emails, letters, or any direct or indirect discussion of the Proposal

Key Dates

- December 8, 2020
- Dec. 15, 2020 by 2:00 PM
- Dec. 18, 2020 by 2:00 PM
- Jan. 7, 2021 by 2:00 PM
- Jan. 8, 2021 by 2:00 PM
- Jan. 2021
- Jan/Feb 2021
- March 2021
- March 15, 2021

Non-Mandatory Pre-Proposal Meeting

Questions Due

Addendum Posted to SAWS Website

Deadline to request FTP Site

Proposals Due

Proposals Evaluated

Selected Contractor Notified

SAWS Board Approval and Award

NTP Issued

Submission Due Date

- Proposals due no later than **2:00 PM CDT January 8, 2021**
- **Electronic Proposals Only**
- Follow specific electronic proposal delivery instructions:
 - Request the FTP Site for Upload no later than January 7, 2020 at 2:00 PM
 - Follow naming convention provided in the Respondent Proposal Checklist for all 3 files
 - Late responses will not be accepted and will be not be opened
 - A WebEx proposal opening meeting will be held January 8, 2021 at 2:00 PM
- SAWWS continues to monitor and adhere to the current COVID-19 guidelines and may modify the proposal submission instructions.

Contract Background

- Submittals can be submitted as soon as receiving notification of contract award after CPMS training (if necessary) has been completed and CPMS record is ready
- Prior to commencing work, contractor must submit and receive approval of the following:
 - Construction Schedule
 - Pre-construction video
 - Lease agreements
- There will be one pre-construction meeting
- Contractor must submit a Work Progress Schedule within 10 days of NTP and monthly thereafter

Contract Background

- Contractor to follow requirements identified in corresponding permits or agreements.
 - City of San Antonio Tree Permit
 - City of San Antonio Floodplain Development Permit
 - City of San Antonio & TxDOT Right-of-Way
 - Storm Water Pollution Prevention Plan (SWPPP)
- Changes in field that are cited by the Agency's Inspector will require concurrence and approval from the SAWS Inspector first.
- If contractor would like to work weekends or extended hours, notification is required 48 hours in advance to SAWS Construction and Inspections. Requests should be send to constworkreq@saws.org.

Contract Background

- All RFIs, RFPs, submittals, and any other items related to construction must be uploaded and processed via CPMS.
- No work can be performed by the Contractor unless the cost for that line item is on the contract.
- All traffic control plans must be submitted to and approved by CoSA or TxDOT, as applicable.
- Change orders, if any, will be based on negotiated prices if items are not in the price proposal.
 - Negotiated using RS Means

Contract Requirements

Supplemental Conditions

- Liquidated damages (LDs) for final completion extending beyond contract time will be assessed at a rate of:
\$ 1,850.00 per Day

Upcoming Addendum

Items to be addressed in addendum

- Electronic Proposal Opening information will be included in Addendum to include information about FTP site access.
- Correction of Points in Supplementary Instruction to Respondents (SIR), Section E. Response Format, I Team Qualifications and Experience to 20 points and 2 Quality, Reputation, and Ability to Deliver Projects on Schedule and within Budget.
- Issued December 8, 2020

Contract Requirements

Special Conditions

- SC-1 Geotechnical Data Report (12/10/2019) is available here:
 - https://apps.saws.org/business_center/ContractSol/
 - Find this project, select “More”, then “Geotechnical Data Report.”
- SC-2 Consent Decree Notice Provision
- SC-3 Contractor to notify SAWS and Engineer of Record two (2) week prior to any work within the TxDOT ROW
- SC-4 Rock Excavation – Soil borings were widely spaced along the project, the boring encountered Limestone and Shale bedrock at relatively shallow depths; thus, the need of rock excavation equipment should be anticipated for construction at this site.

Contract Requirements

Special Conditions (continued)

- SC-5 BMP Developers Property:

- A. Construction Staging and Bore Pit:

- Construction activities may not occur upon the Shopping Center. All construction activities shall occur north of Bulverde Road and south of the Shopping Center.

- B. Construction Schedule:

- Contractor will provide at least 10 days prior written notice to BMP 1604 of the commencement of construction as well as the applicable portions of the construction schedule.

- C. Damage to Improvements, Landscaping, and Trees:

- Any Damage to above-ground or below-ground improvement, landscaping or trees must be restored substantially to the same condition that existed prior to the construction, which restoration shall be certified by the Project Engineer.

- If any trees are removed and replaced, the Contractor shall obtain for the benefit of BMP 1604 a warranty from the landscaping company for the installed trees.

Contract Requirements

Special Conditions (continued)

- SC-6 Milberger Property:
 - A. Contractor shall not enter or proceed with construction activities on the Milberger Property (Sta 44+89.04 to End) until specific notice to proceed for such activity (separate from the general notice to proceed for the E-4 Sanitary Sewer project) has been issued by SAWWS.
 - B. An estimated date of issuance of this separate NTP is August 2021.

Contract Requirements

Special Provisions/Special Specifications/Supplemental Specifications

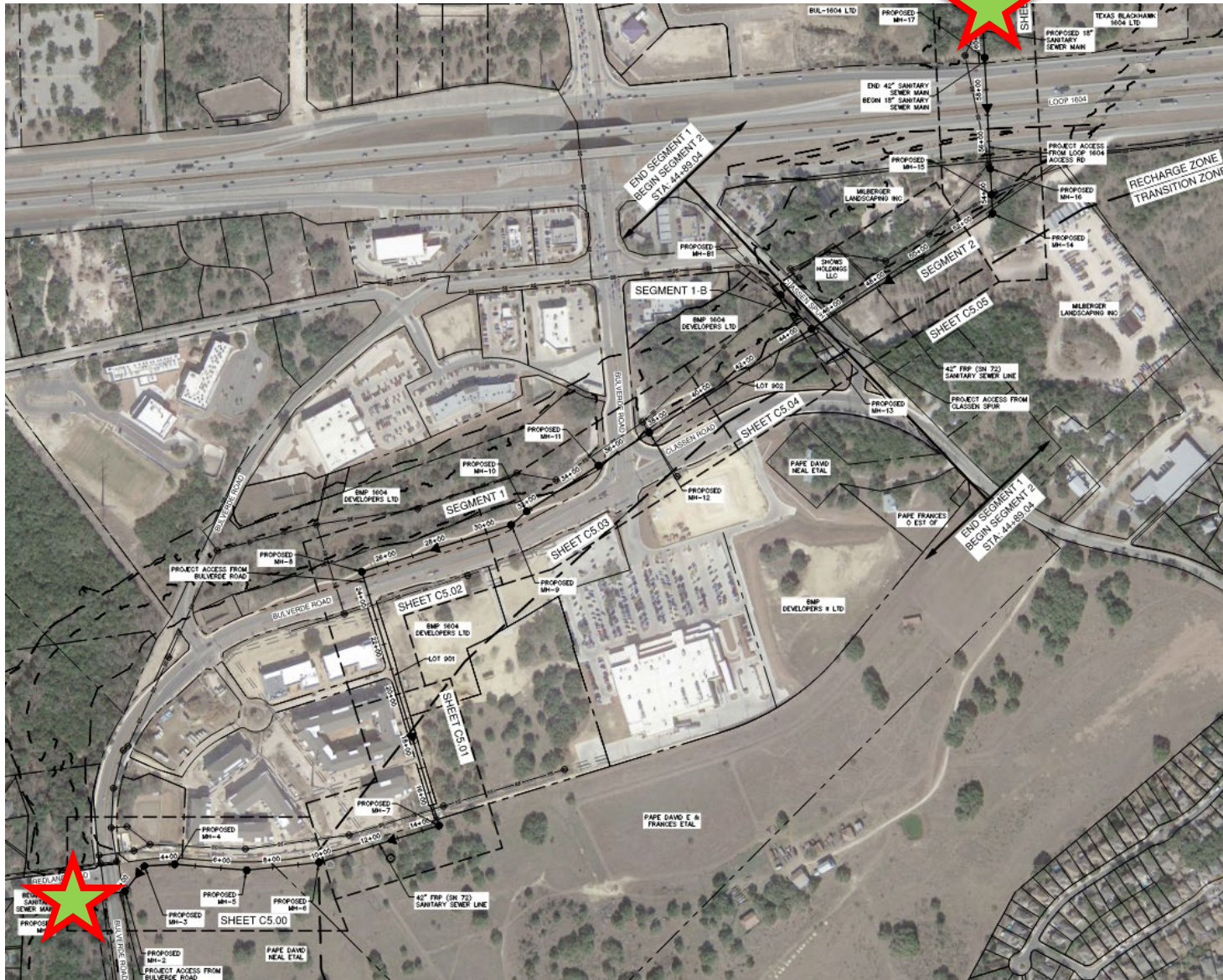
- Addendum I-
 - Added the section Supplemental Specifications to the contract documents.

Contract Requirements

Special Provisions/Special Specifications/Supplemental Specifications

- Addendum I-
 - Added the section Supplemental Specifications to the contract documents
- SS 853 – Sanitary Sewer Glass (RFP) Manholes
- SS 1050 – Survey Controls
- SS 2140 – Control of Ground and Surface Water
- SS 2218 – Low Density Cellular Grout Fill
- SS 2242 – Water Control for Shaft Tunnel Construction
- SS 2314 – Tunneling with Steel Liner Plate
- SS 2315 – Portal Stabilization
- SS 2400 – Tunnel Shafts
- SS 2426 – Carrier Pipe in Tunnels
- SS 2441 – Pipe-Jacked Tunnels
- SS 2442 – Direct Pipejacking Tunnels
- SS 2445 – Settlement Monitoring
- SS 2610 – Steel Casing Pipe
- SS 3360 – Contact Grouting

Project Location



Project limits

- Southern limit:
 - Redland Road and Bulverde Rd.
- Northern Limit
 - North of 1604 across from Milbergers

Project Overview

Project divided into two segments



Segment 1-

Redland Rd. to Classen Spur

- 4,390 LF 42" FRP (SN 72)
- 178 LF 18" PVC (SDR 26)
- 3 Bore/Tunnels
 - 64 LF across Bulverde Rd.
 - Pipe Jacked/Tunneling with Liner Plate
 - 1,008 LF across BMP 1604 Property
 - Tunneling with Liner Plate
 - 215 LF across Bulverde Rd.
 - Pipe Jacked/Tunneling with Liner Plate

Project Overview

Project divided into two segments

Segment 2

Segment 2-

Classen Spur across Loop 1604

- 1,435 LF 42" FRP (SN 72)
- 14 LF 36" FRP (SN 72)
- 160 LF 18" PVC (SDR 26)
- 2 Bore/Tunnels
 - 413 LF across LOOP 1604
 - Pipe-Jacked Tunnel
 - 816 LF across Milberger/Classen Spur
 - Open Shield Tunneling with Liner Plate

Questions

- Submitted no later than December 18, 2020 at 2:00 PM CDT
- Identify solicitation number
- Must be submitted in writing:

Roxanne L. Lockhart

Contract Administrator

Contract Administration Department

San Antonio Water System

Roxanne.lockhart@saws.org

Fax: (210) 233-4438